



MONTHLY MEMBERSHIP PROGRESS REPORT

Results as of: 4/30/2016

Multiple District 14

LOCATION: PENNSYLVANIA

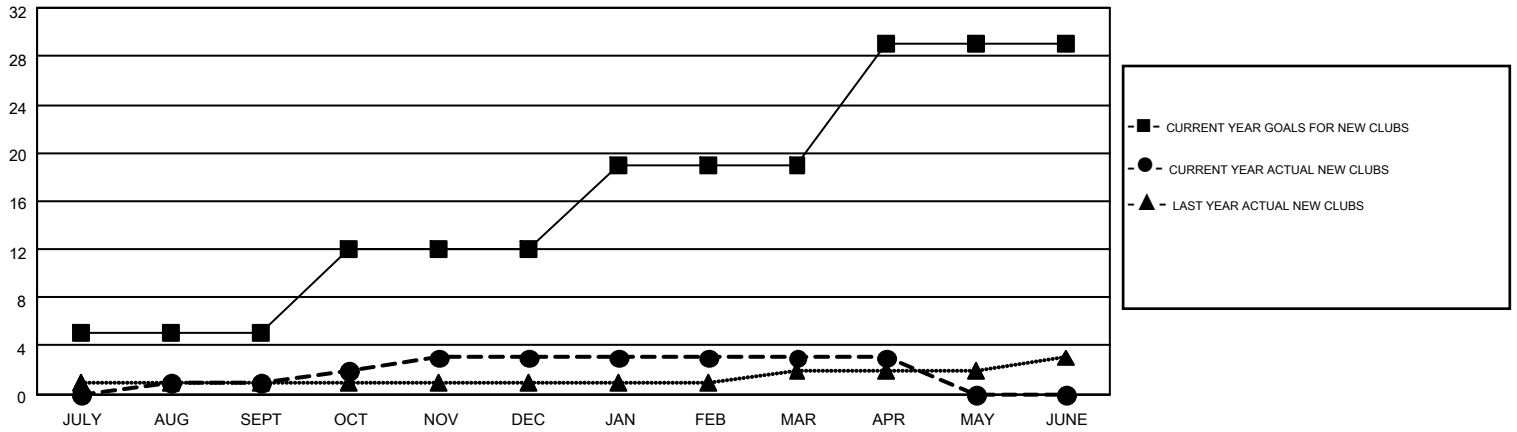
GMT: CINDY GREGG

GMT CA 1

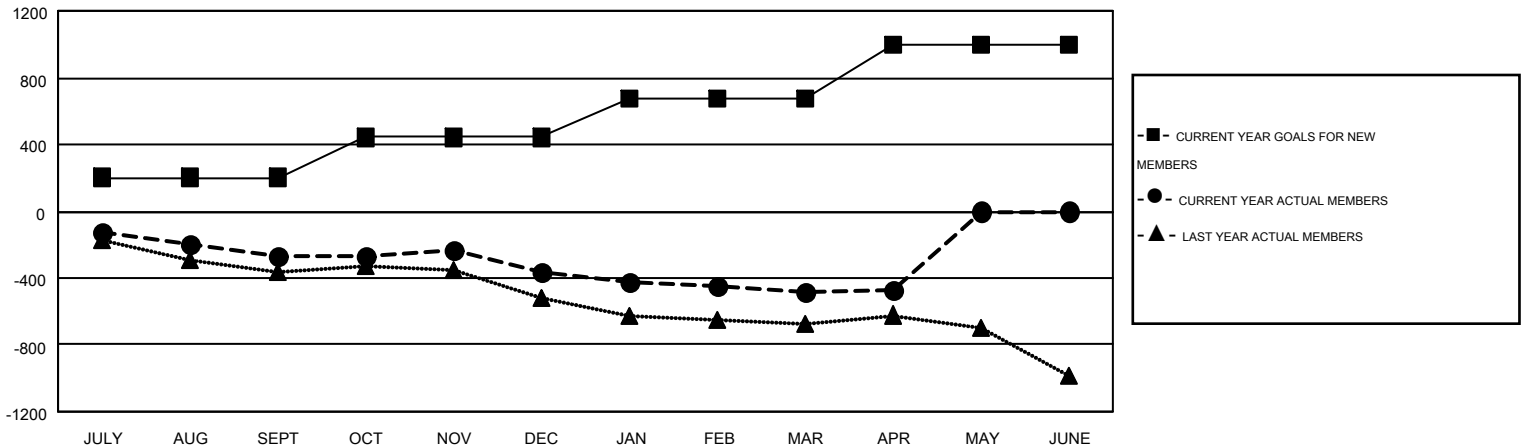
Clubs				
RESULTS FOR 2015-2016				
QUARTER	NEW CLUB GOAL	NEW CLUBS	DROPPED CLUBS	NET GAIN/LOSS
JULY/AUG/SEPT	5	1	8	-7
OCT/NOV/DEC	7	2	1	1
JAN/FEB/MAR	7	0	2	-2
APR/MAY/JUNE	10	0	0	0

Members				
RESULTS FOR 2015-2016				
QUARTER	NEW MEMBER GOAL	CHARTER AND NEW MEMBERS ADDED	DROPPED MEMBERS	NET GAIN/LOSS
JULY/AUG/SEPT	203	308	580	-272
OCT/NOV/DEC	239	417	507	-90
JAN/FEB/MAR	237	362	488	-126
APR/MAY/JUNE	319	116	98	18

GOALS AND ACTUAL NEW CLUBS CUMULATIVE



GOALS AND ACTUAL MEMBERS CUMULATIVE



DROPPED CLUBS: 11

379 CLUBS OF 712 ADDED 1 OR MORE NEW MEMBERS

GENDER DISTRIBUTION	
MALE	15,021 (76.27%)
FEMALE	4,673 (23.73%)

DROPPED MEMBERS	
DECEASED	328
CLUB CANCELLED	115
OTHER	1,226
TOTAL	1,669

[CLICK HERE FOR HEALTH ASSESSMENT DATA](#)

FAMILY UNIT MEMBERS	3,465
HEAD OF HOUSEHOLD	1,682
NON-HEAD OF HOUSEHOLD	1,783